



Cape Town BioNet (Biodiversity Network) 2024

Information Sheet

About the Cape Town BioNet 2024

Did you know?

Cape Town was the first municipality in South Africa to develop and implement a spatial biodiversity plan.

Cape Town's first fine-scale, systematic spatial biodiversity plan for the entire municipality (known as the Biodiversity Network or BioNet) was completed in 2004. Major revisions took place in:

Year	Revision details
2009	Revised after ground-truthing and included the Red List of Threatened Ecosystems
2011	Added climate change adaptation
2016	Added the national wetland classification
2021	Added strategic water source areas, groundwater protection zones and an extended planning domain. The domain includes a 10 km buffer around the city, together with major water supply dams and their associated sub-catchments. This is in recognition of the city's reliance on ecological infrastructure and ecosystem services from outside of Cape Town.

We develop the Cape Town BioNet in collaboration with partner conservation organisations. Annual targets for protected area expansion have been set since 2009. Currently, conserved land in Cape Town covers 55 703 ha, which is 22.72% of the municipal area and 65.53% of the baseline BioNet 2009.

Cape Town's conservation estate comprises Table Mountain National Park, nature reserves, and conservation areas, as well as private biodiversity stewardship sites.

The City manages 20 045 ha in [22 nature reserves](#) and 16 Biodiversity Agreement [conservation areas](#) in this conservation estate, the majority of which are open to the public.

You can access the Cape Town BioNet 2024 online via the following channels:

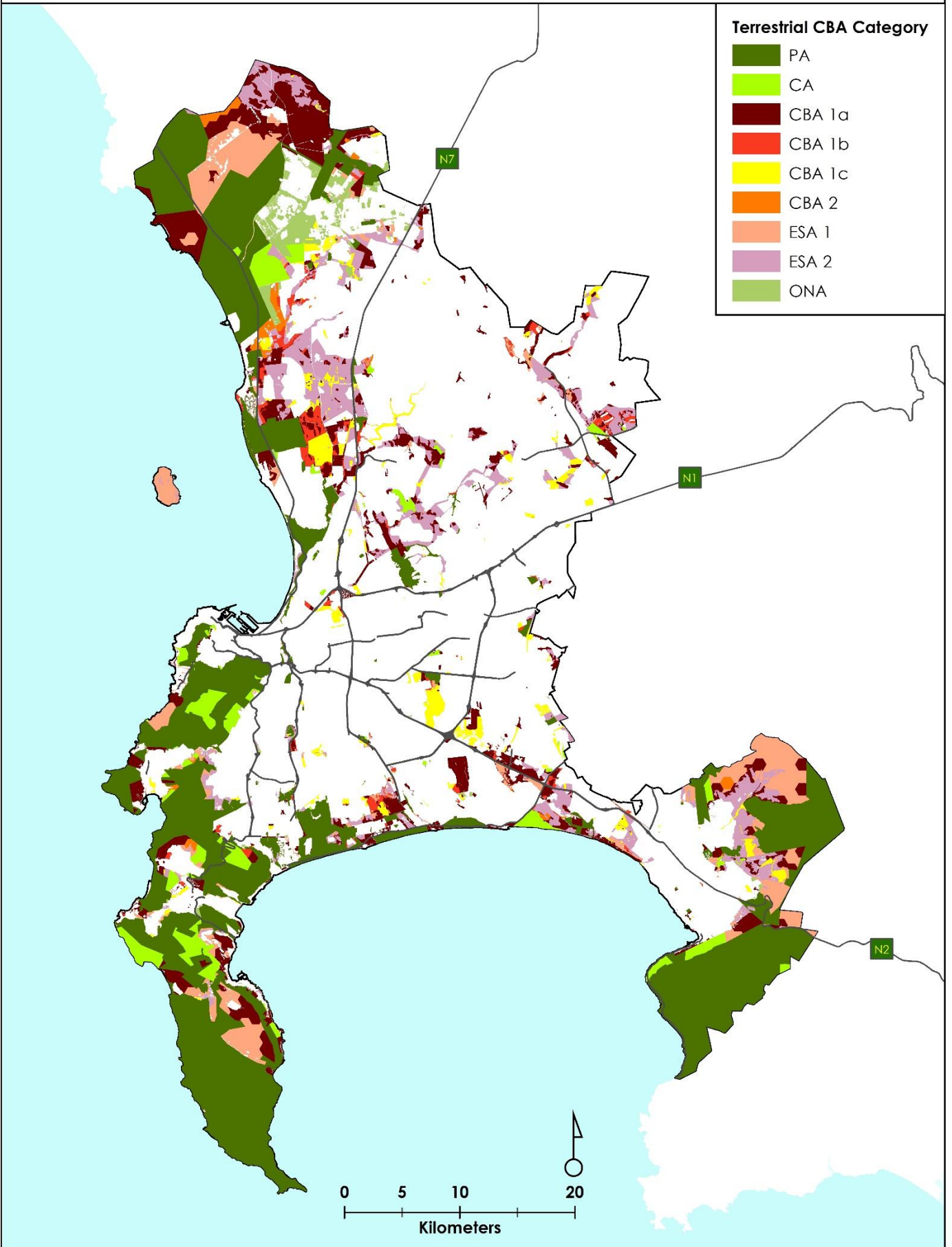
- [City Map Viewer](#)
- [Open Data Portal](#)

BioNet 2024 categories

The Cape Town BioNet 2024 includes the following categories (see map on page two):

PA	Protected Area
CA	Conservation Area
CBA 1a	Critical Biodiversity Area 1a (irreplaceable high and medium condition)
CBA 1b	Critical Biodiversity Area 1b (irreplaceable low condition, connectivity)
CBA 1c	Critical Biodiversity Area 1c (irreplaceable low condition)
CBA 2	Critical Biodiversity Area 2 (optimal)
ESA 1	Ecological Support Area 1 (natural or semi-natural ecological condition)
ESA 2	Ecological Support Area 2 (intensively modified ecological condition)
ONA	Other Natural Area (not required to meet biodiversity targets)

Terrestrial BioNet 2024



Map Produced By: Biodiversity Management Branch
City of Cape Town, Environmental Management Department
Contact: Enviro.GIS@capetown.gov.za
Date: June 2024, Version: rev02_ver03_28062024

